



MATERIALS



## THE CONSTRUCTION SECTOR IS RESPONSIBLE FOR :

- 1/3 of the total CO<sub>2</sub> emissions
- 40% of resource extraction
- 1/3 of air pollution
- 30% of total waste





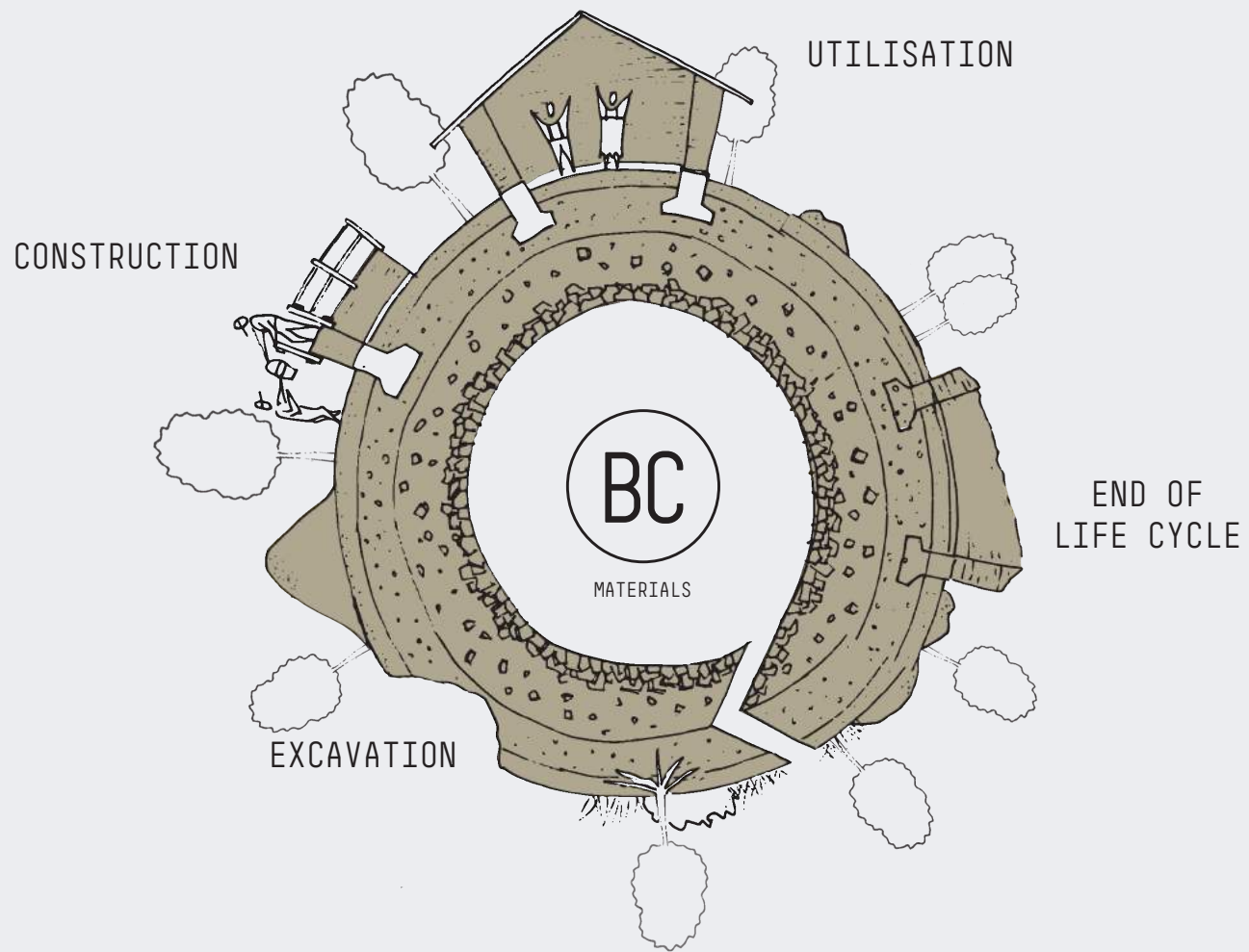
ARCHITECTS



STUDIES



MATERIALS



A company that transforms  
**excavated earth** from building sites into **building materials**

## CIRCULAR IN ORIGIN AND DESTINY

- 100% CIRCULAR
- ZERO CO<sub>2</sub> EMISSIONS
- ZERO POLLUTION
- ENDLESSLY REUSABLE
- ABUNDANT RESOURCE





## HEALTHY, BIOBASED AND BEAUTIFUL ARCHITECTURE

- Mitigates electromagnetic radiation
- Good acoustic performance
- VOC and pollutants free
- Regulates indoor humidity and temperature
- Relinks humans with locality





DID YOU KNOW .... ?

We spend **90%** of our lives indoors

There can be up to **5x** more pollution indoors

**AIRBORNE PARTICLES**

from diesel, exhaust, dust, smoke and other sources

**INDOOR FORMALDEHYDE**

from building materials, furniture, cooking and smoking

**HOUSEHOLD ODORS & GASES**

from activities such as painting, cooking and smoking

**OZONE**

from outdoor air (ground level ozone is harmful to breathe)

**CARBON DIOXIDE**

from people exhaling and cooking

**INDOOR AIR POLLUTION**

[SOURCE : DIMITRI BESSIOS AT THE DAILY GREEN WORLD]

## EARTHEN PLASTERS PROVIDE

- Better air quality
- Better acoustics
- Better humidity regulation
- Better temperature mitigation





# AMOUNT OF EXCAVATED EARTH (ONLY IN BELGIUM)

- 37 million tonnes
- or 1M trucks/year



EXTRACTION  
FROM LOCAL BUILDING SITES



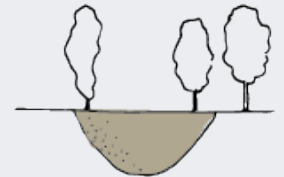
TRANSPORT  
(CO<sub>2</sub> EMISSIONS)



TEMPORARY STORAGE



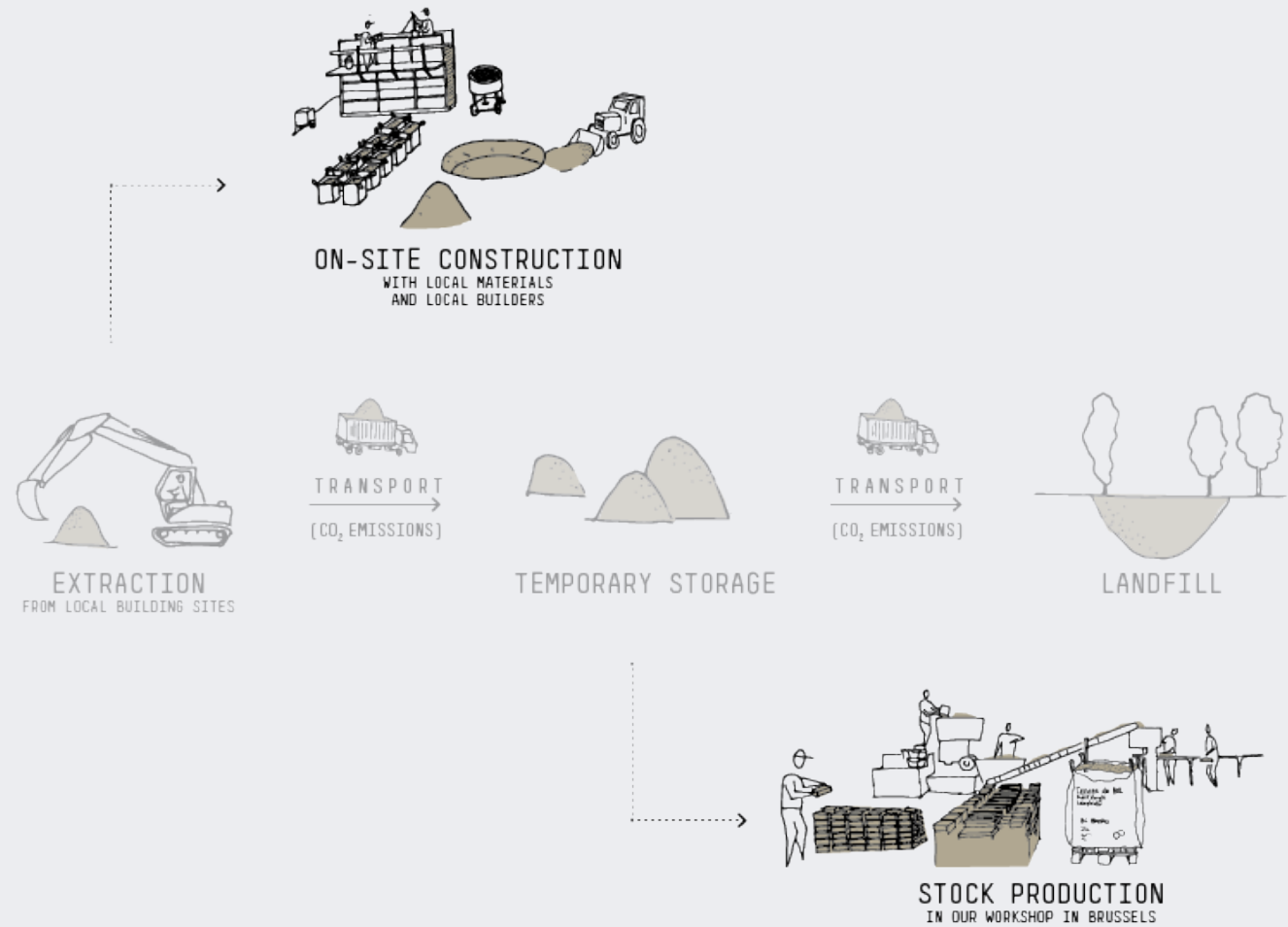
TRANSPORT  
(CO<sub>2</sub> EMISSIONS)

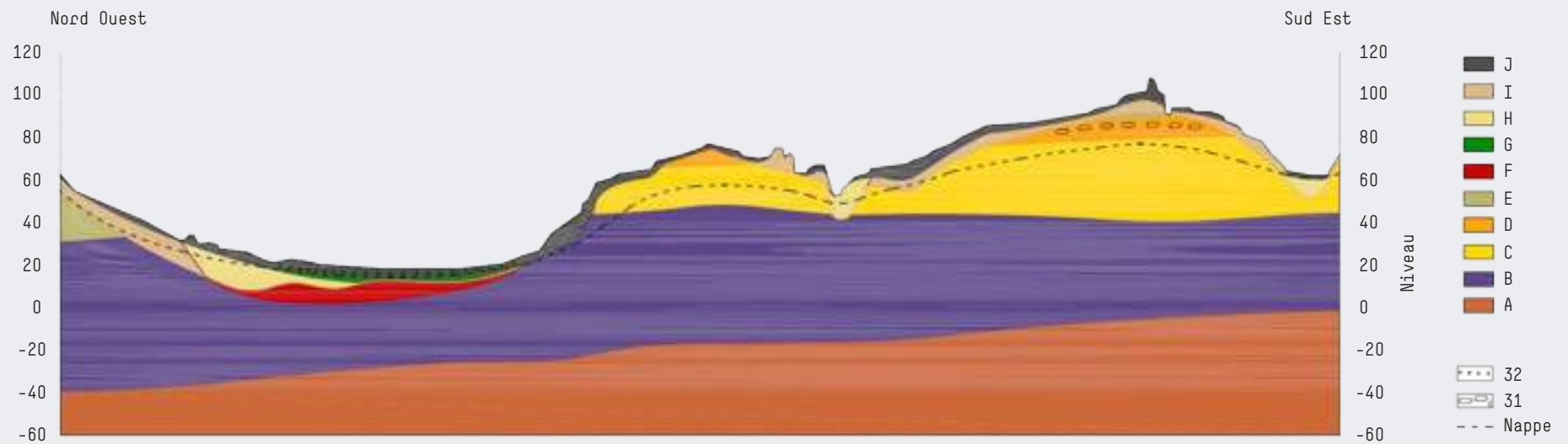


LANDFILL

# POTENTIAL BENEFIT (ONLY IN BELGIUM)

- 16 million tonnes could be used for new construction





#### Tertiaire

- E : Asschien (argiles et sables)
- D : Lédien (sables et grès)
- C : Bruxellien  
(sables et calcaires décalcifiés et grès)
- B : Yprésien : (sables argileux et argiles)
- A : Landénien (sables, limons et argiles)

#### Quaternaire

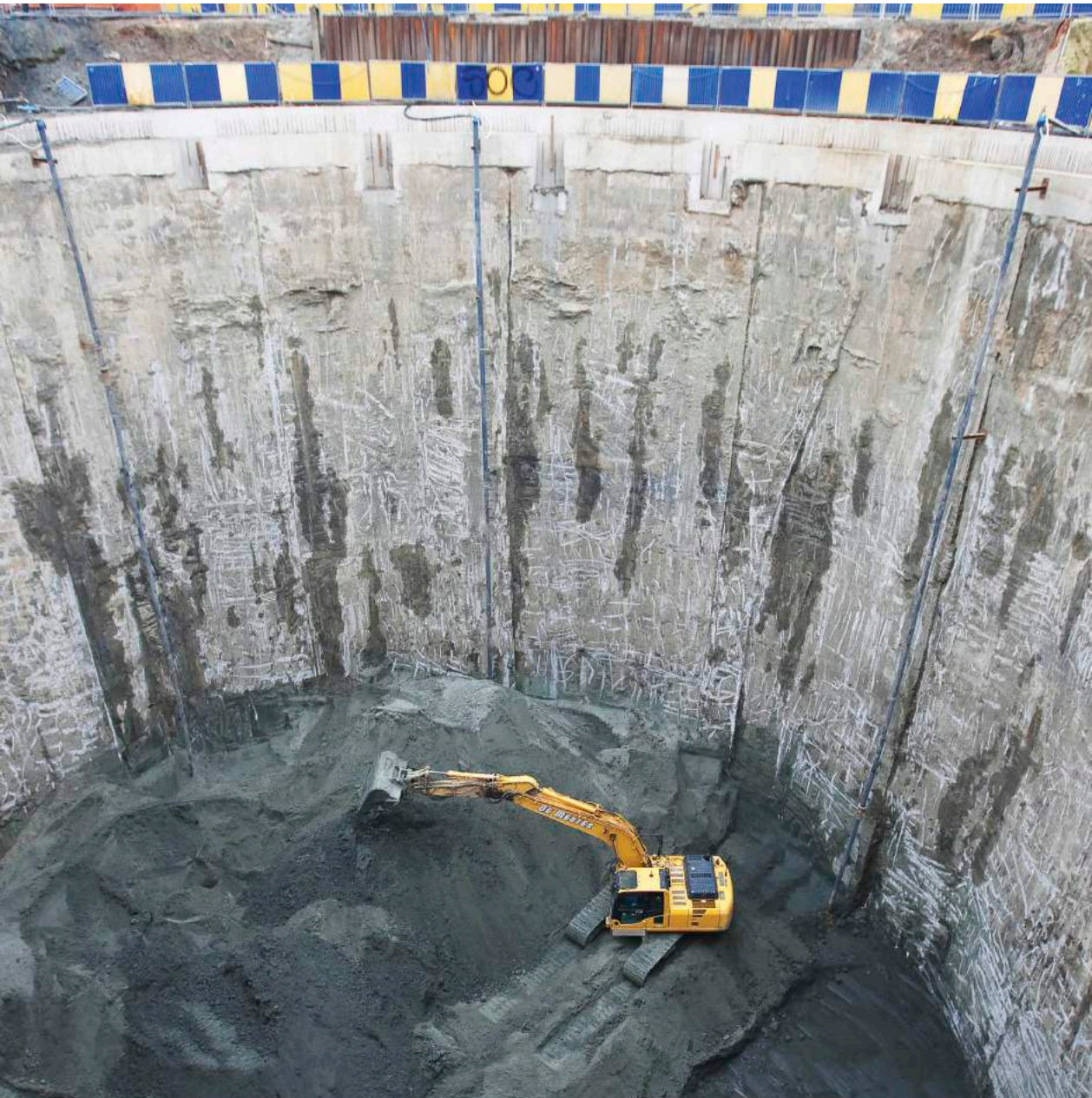
- J : Formations superficielles
- I : Limons de pentes
- H : Limons alluviaux
- G : Argiles alluviales
- F : Sables et graviers alluvionnaires

**GEOLOGICAL SECTION N/O-S/E** (Basilique-Plaine des manœuvres)  
 (Published on "Bruxelles, sur les traces des ingénieurs bâtisseurs", D. Attas et M. Provost Editeurs)

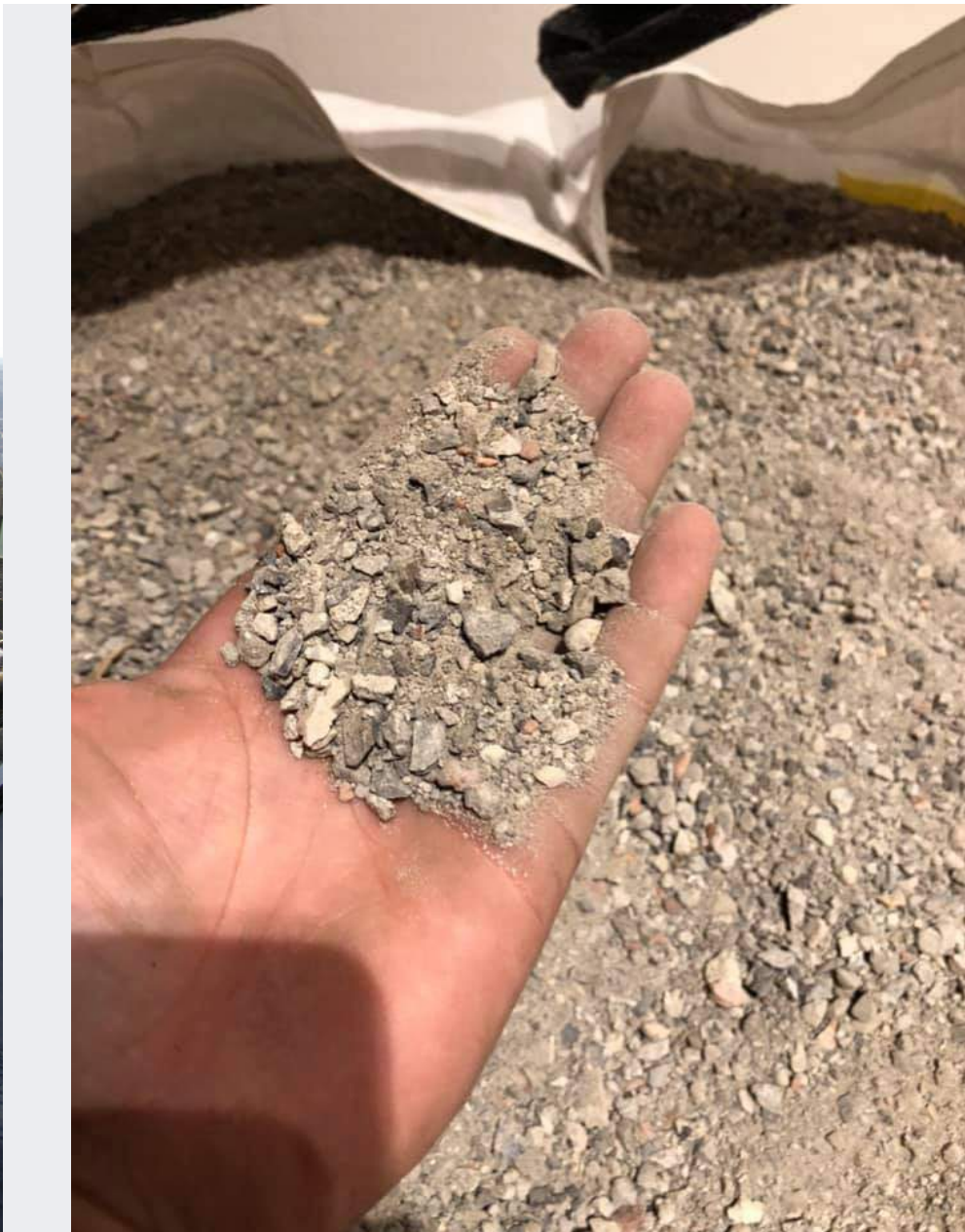
















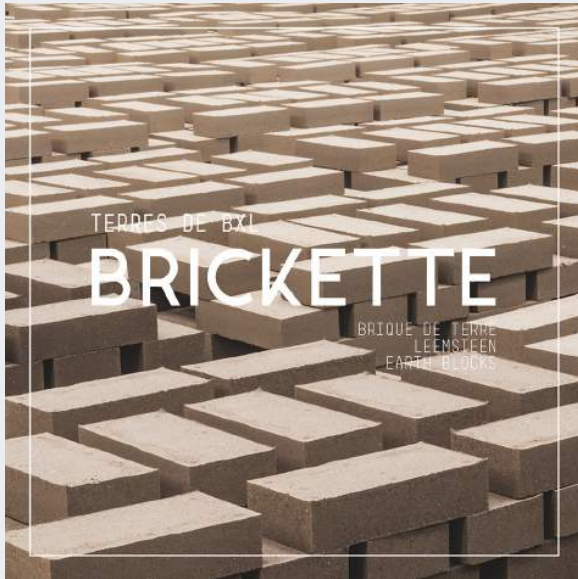






















Project by BC architects & studios - © Thomas Noceto

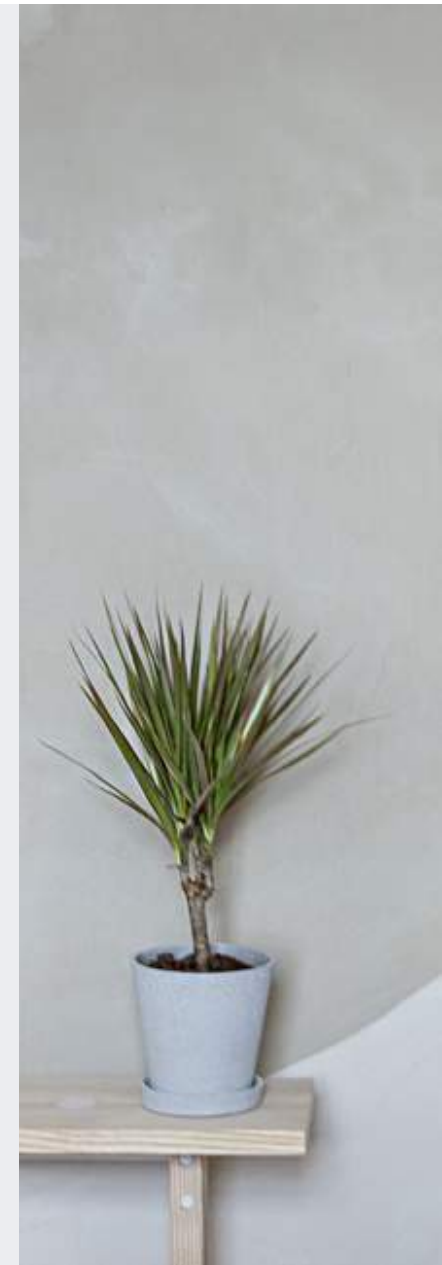






TERRES DE BXL  
**BRUSSELEIR**

ENDUIT À L'ARGILE  
DECKLEISTER  
CLAY PLASTER

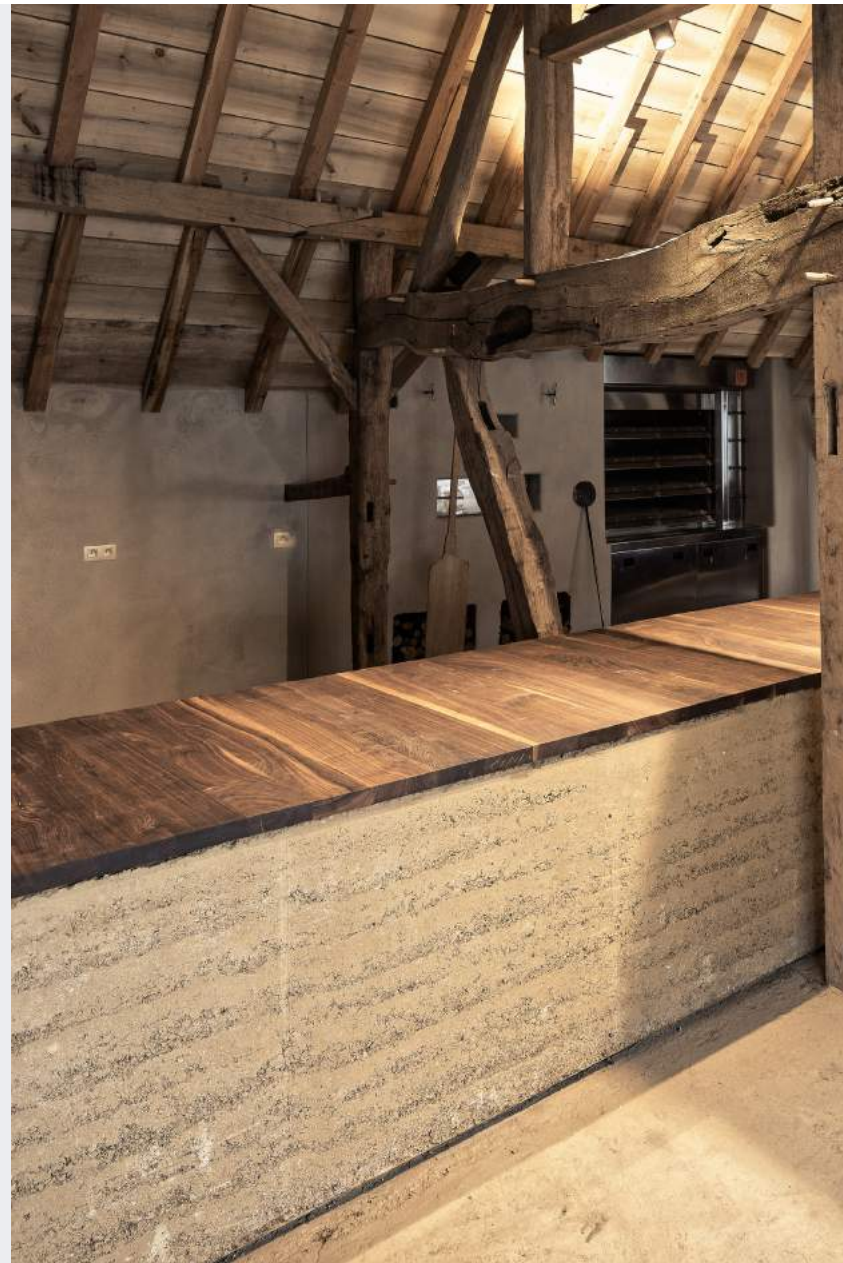
















Project by De Gouden Lijniaal Architecten - © Philip Dujardin









Project by BC architects & studios - © Luc Daelemans





## OUR PLASTERS AND BRICKS ARE DIN CONFORM

- BRICKS     DIN 18945
- MORTAR     DIN 18946
- PLASTERS   DIN 18947

WE ARE IN A RESEARCH GROUP OF WTCB/CSTC  
TO A START A PRE-NORM FOR THE BELGIAN  
CONSTRUCTION SECTOR







[www.BCMATERIALS.org](http://www.BCMATERIALS.org)

