

MULTIMODAL LOGISTICS

SHIPIT

Summer Academy



Buildwise



Brussels 26 september 2023



“moving goods
in a viable city”

1

Shipit in short

Why this project or where is the “pain”

How did we approach the challenge

What have we done - some examples

Impact & future

Questions

2

Almost 20 years, of realising “healthy” modal shift

Revenues Shipit

€12.500.000



BULK



PAPER



PROJECT CARGO



URBAN LAST MILE

€2.500.000



• Liquidity (CR) 2,55

SHIPIT
MULTIMODAL LOGISTICS

Antwerpen – Brussel – Wielsbeke



3

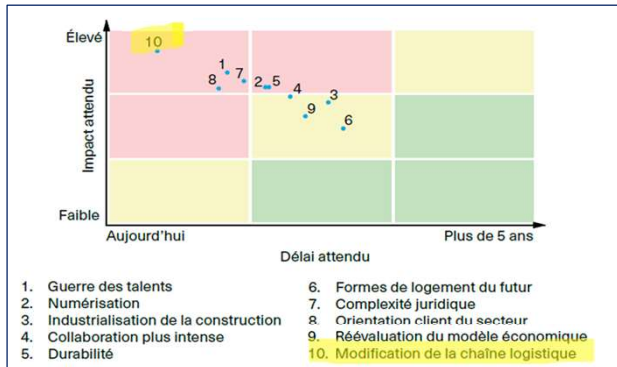


“We are the **first** generation to feel the effect of climate change and the **last** generation who can do something about it”

Barack Obama
Former US president

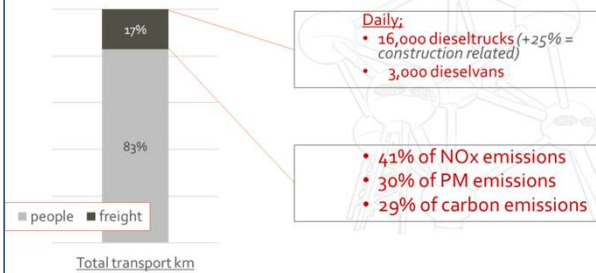
4

Urgent impactful actions to be taken in the supply chain of a.o. the construction industry



Organizing the supply chain is most urgent / important

BRUSSELS



Most trucks arrive at destination for less than 50 % loaded

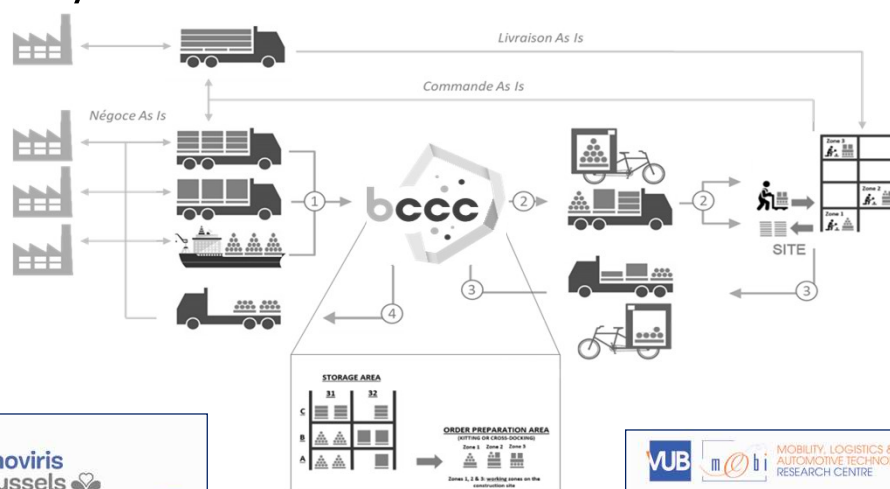
SHIPIT
MULTIMODAL LOGISTICS

Antwerpen – Brussel – Wielsbeke

MOST SUSTAINABLE COMPANY 2023

5

That's why we created the **BCCC**



innoviris
.brussels
we fund your future



MOBILITY, LOGISTICS & AUTOMOTIVE TECHNOLOGY RESEARCH CENTRE

Buildwise

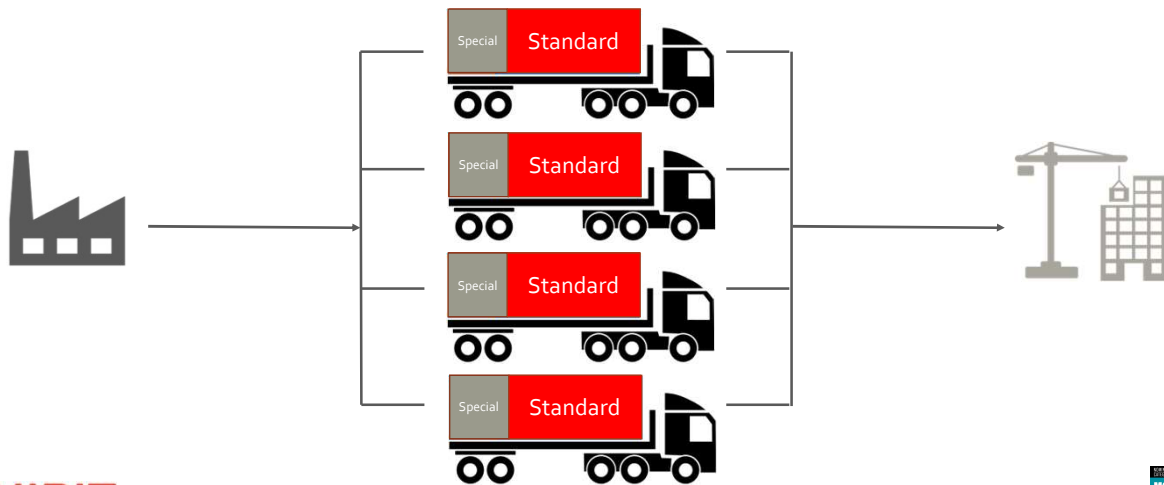
Embuild
THE BRUSSELS CONSTRUCTION ASSOCIATION

SHIPIT
MULTIMODAL LOGISTICS

Antwerpen – Brussel – Wielsbeke

6

Impact on structural works: residential
construction site; **80 trucks / month** (*4 trucks / day*)



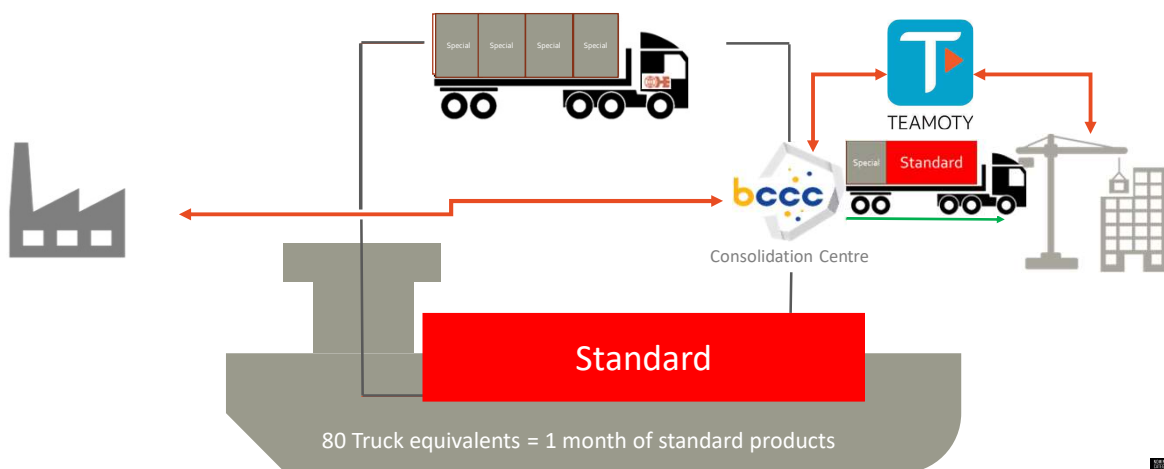
SHIPIT
MULTIMODAL LOGISTICS

Antwerpen – Brussel – Wielsbeke

Most Sustainable Company 2023
by EY

7

Standard pieces via **ship**, specials via **truck**
+ *supply chain digitalized, last mile consolidated*



SHIPIT
MULTIMODAL LOGISTICS

Antwerpen – Brussel – Wielsbeke

Most Sustainable Company 2023
by EY

8

Well located along the Brussels Canal

- At < 5 km,
 - 70% Population
 - 70% Construction sites
- Easy access to the city



SHIPIT
MULTIMODAL LOGISTICS

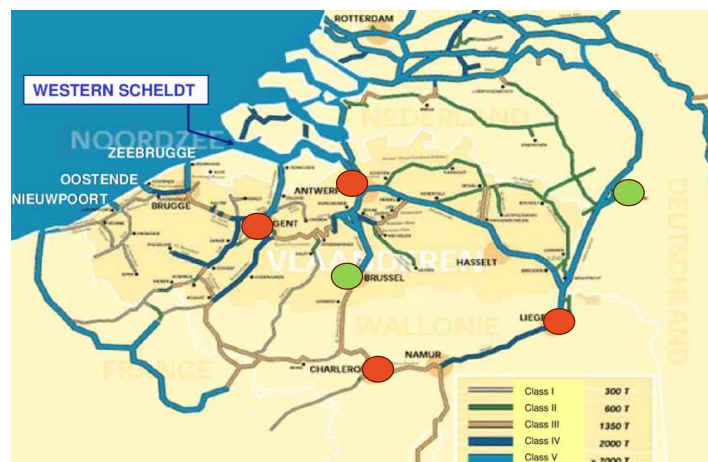
Antwerpen – Brussel – Wielsbeke

MOST SUSTAINABLE COMPANY 2023
by ERM

9

Scaleable in Belgium and beyond

Antwerp
Ghent
Liege
Charleroi



SHIPIT
MULTIMODAL LOGISTICS

Antwerpen – Brussel – Wielsbeke

MOST SUSTAINABLE COMPANY 2023
by ERM

10

EX 1: +1000 tons of street tiles loaded in Ghent, only 2 days later at destination in Brussels



Brussels North terminal

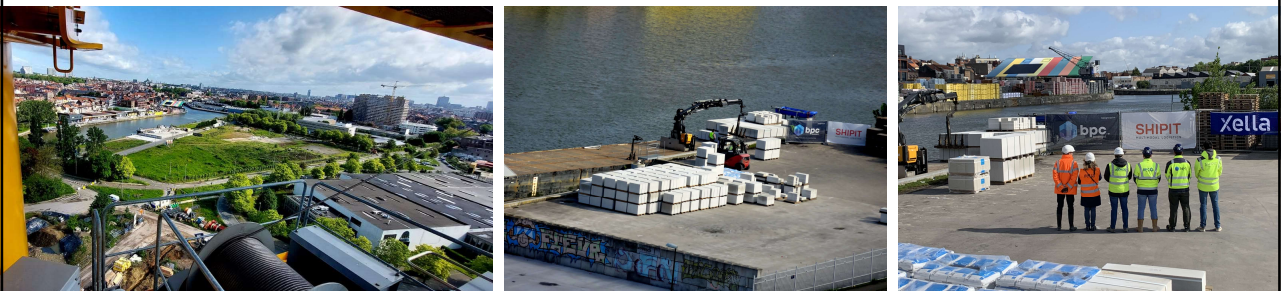
SHIPIT
MULTIMODAL LOGISTICS

Antwerpen – Brussel – Wielsbeke



11

EX 2: Unloading Xella blocks in Anderlecht



Brussels South terminal

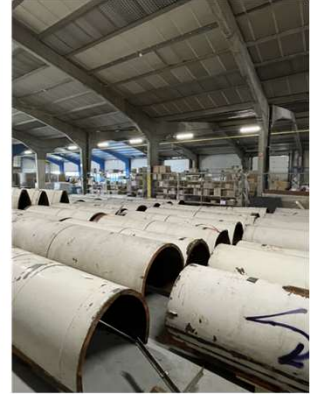
SHIPIT
MULTIMODAL LOGISTICS

Antwerpen – Brussel – Wielsbeke



12

Ex 3: Circular building,



WTC: 700 tons concrete cleaned / re used (1 ton = 75 kg CO₂)

Pompidou: 3 ships of outside walls, to be cleaned & re-used

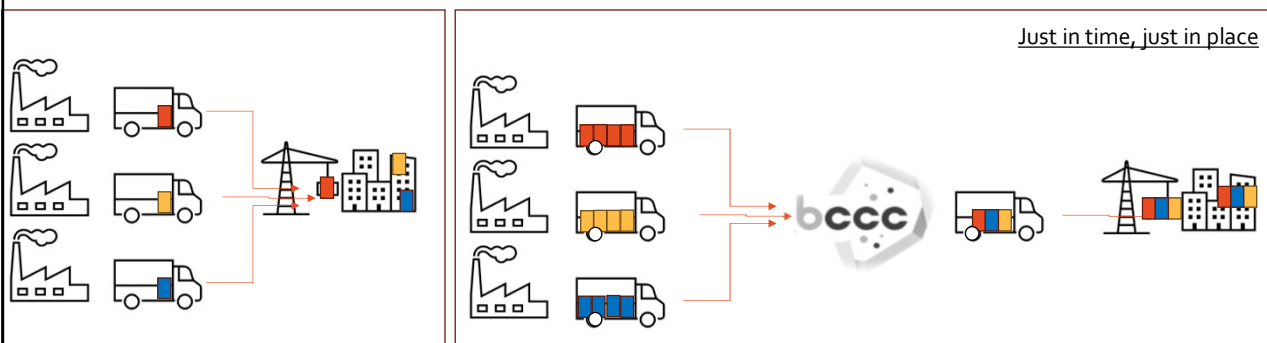
SHIPIT
MULTIMODAL LOGISTICS

Antwerpen – Brussel – Wielsbeke

most
SUSTAINABLE
COMPANY
2023

13

Ex 4: Kitting, starting up in december 2023



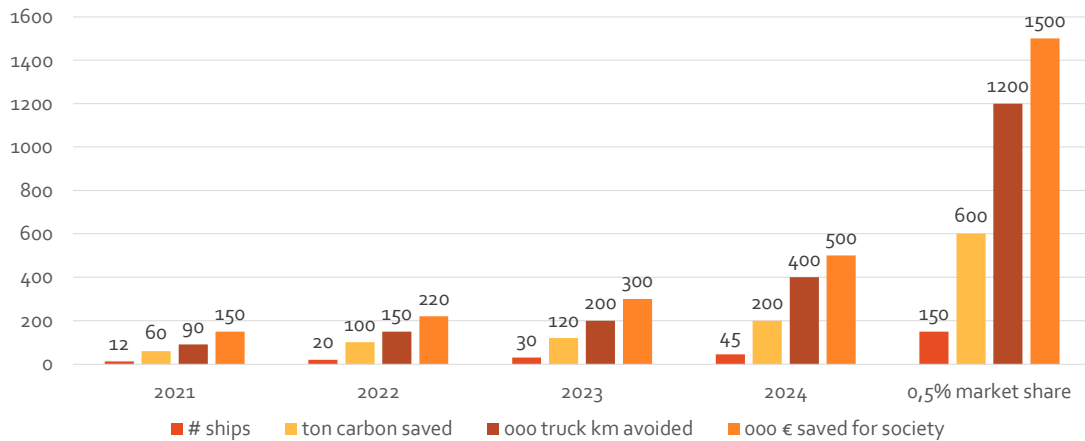
SHIPIT
MULTIMODAL LOGISTICS

Antwerpen – Brussel – Wielsbeke

most
SUSTAINABLE
COMPANY
2023

14

This initiative for the **construction industry** is meaningful !



SHIPIT
MULTIMODAL LOGISTICS

Antwerpen – Brussel – Wielsbeke

Based on VUB / Mobilize research

15

Projects for the future



Finishing (Kitting) +
reverse logistics



ADVICE on Urban
Logistics



Consumer products via
waterway



Increase volume, start
new cities & diversify



Publish best practice
studies

SHIPIT
MULTIMODAL LOGISTICS

Antwerpen – Brussel – Wielsbeke



16

Promising CUSTOMERS



17

Green deal for Low Emission Urban Logistics, we signed, and we “thick the boxes”



Awareness	Towards contractors, real cost, communication	✓
Avoidance	25 million KM & 10,000 tons of carbon can potentially be avoided	✓
Act and shift	Volumes from road (diesel) to water and last mile (partly electric)	✓
Anticipation of new technologies	Digitalisation of logistics in the construction industry	✓

SHIPIT | Multimodal Logistics | Antwerpen – Brussel – Wielsbeke



18

